



# ZB2044

## TELEHANDLER

### KEY FEATURES

- 20,000 lbs (9,072 kg) Maximum lift capacity
- 44' 10" (13.67 m) Maximum lift height
- 10,000 lbs (4,536 kg) Capacity @ maximum lift Height (no outriggers)
- 12,000 lbs (5,443 kg) Capacity @ maximum lift Height (on outriggers)
- 27' 5" (8.36 m) Maximum Forward Reach
- 4,000 lbs (1,814 kg) Capacity @ maximum reach (no outriggers)
- 7,000 lbs (3,175 kg) Capacity @ maximum reach (on outriggers)
- Cummins Tier 4 Final QSB 4.5C, turbocharged and charge-air cooled diesel, 168hp @ 2300rpm
- Powershift, 3 speed transmission
- 3 Mode steering
- 72" Quick attach, floating pin carriage
- Pallet forks, 2.75"x60"x60", 22,100 lbs capacity

### STANDARD FEATURES

- Axle mounted outriggers
- Rear axle "Stable-Lock" cylinder with backup accumulator
- Standard quick attach carriage mount system
- Auxiliary hydraulic for boom attachments
- Dual lift cylinders
- High pivot boom mount design
- Rear window and side screen
- Lockable under cab storage compartment / step
- Adjustable suspension seat with seat belt
- Dual joystick pilot operated controls for boom and frame level functions
- Tilt adjustable joystick console
- Gauge instrumentation
- Electronic powerview engine monitor/gauge
- Lockable steel swing up engine doors
- Dual batteries
- Independent front/rear brake systems
- Dual brake accumulators for dead engine braking
- Brake activated transmission disconnect
- Steel fuel and hydraulic tanks
- Mirrors, right and left side
- Remote grease fittings for axle trunnion mount lubrication
- Easy to remove steel component and access covers
- 2 Year Gold Leaf Warranty (5 year structural warranty)

† Standard lead times may be increased when optional equipment is added, consult factory.

‡ Capacities and machine weights may differ when options are added.

# ZB2044 TELEHANDLER 20,000 lbs (9,072 kg) capacity, 44' 10" (13.67 m) maximum lift height

## SPECIFICATIONS

### ZB2044

Maximum Lift Capacity	20,000 lbs (9,072 kg)
Maximum Lift Height	44' 10" (13.67 m)
Rated Lift Capacity @ Maximum Height	10,000 lbs (4,536 kg)
Rated Lift Capacity @ Maximum Height w. O/R	12,000 lbs (5,443 kg)
Maximum Forward Reach	27' 5" (8.36 m)
Rated lift Capacity @ Maximum Reach	4,000 lbs (1,814 kg)
Rated Lift Capacity @ Maximum Reach w. O/R	7,000 lbs (3,175 kg)
O/A Length - Less Forks	20' 3" (6.17 m)
Overall Height - Stowed	9' (2.74 m)
Overall Width	8' 6" (2.59 m)
Ground Clearance	18" (46 cm)
Turning Radius - Outside	18' 4" (5.59 m)
Operating Weight	45,000 lbs (20,412 kg)
Engine	168hp Cummins QSB 4.5C T4F
Max Travel Speed - Forward	20.5 mph (33 kmh)
Transmission	Dana powershift, 3 speed F/R
Axles	Axletech steerable outboard planetary
Service Brakes	4 wheel disc
Parking Brakes	Pinion mounted dry disc on front axle
Steering	3 mode (2 wheel, 4 wheel, crab)
Tires	17.5 x 25 16PR grip lug
Fuel Tank Capacity	48 gallon (185 L)
Hydraulic Reservoir	55 gallon (208 L)

## OPTIONS

- Closed cab (adds front and top window, sound insulation, heater/defroster, and dome light)
- Air conditioning (closed cab only)
- Back up sensor
- Backup sensor and camera
- Mine Package (backup braking & steering systems, drive shaft covers)
- Front and rear fenders
- Lighting kit with guards - 2 front white / 2 rear red
- Front and rear turn signals with flashers
- Extra operating light with guard
- Boom mounted operating lights
- Rotating beacon
- Positive air shut-off valve
- Non destructive testing
- ELEVATE telematics package
- Warranty options (3 year and 5 year options available)

## QUICK ATTACH CARRIAGES / ATTACHMENTS

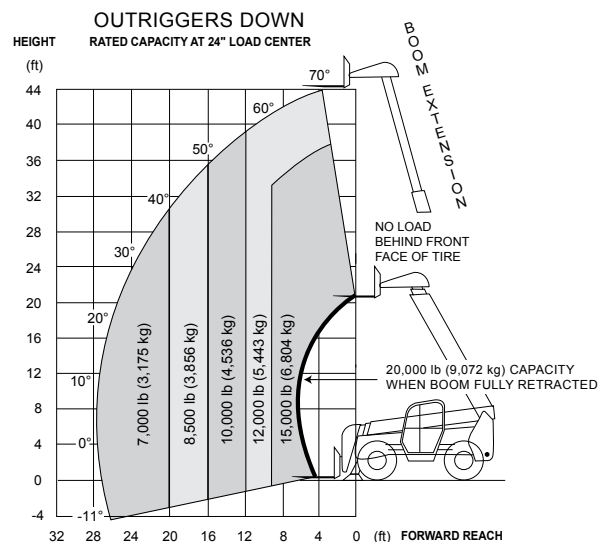
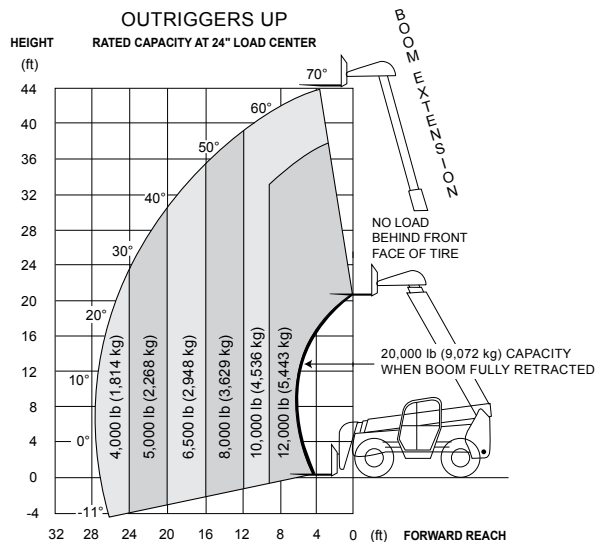
- 72" or 84" Dual hydraulic fork positioner, 20,000 lbs capacity
- 72" or 84" Side shift carriage and dual hydraulic fork positioner, 19,000 lbs capacity
- 5' Jib boom, 20,000 lbs capacity
- 2.0 cu. yd. Light material handling bucket, 4,000 lbs capacity
- Hydraulic winch, 15,000 lbs capacity
- Pipe and pole clamp, 18,000 lbs capacity
- Rotating pipe and pole manipulator, 8,000 lbs capacity
- Bridge stripper, 18,000 lbs capacity

## TIRE OPTIONS

- Foam-filled tires

## FORK OPTIONS

- Pallet forks, 2.75"x6"x60", 72" or 96"



### Skyjack Head Office

55 Campbell Rd. Guelph, ON Canada N1H 1B9  
 Sales Inquiries: 1-877-755-4387 (1-877-SJLIFTS)  
 Main Switchboard: 1-800-265-2738  
 Phone: 519-837-0888  
 Fax: 519-837-8104  
 Email: skyjack@skyjack.com  
 www.skyjack.com

### IMPORTANT

- Machine design complies with ANSI/ITSDF B56.6-2016 stability requirements for rough terrain forklifts.
- Rated capacities shown are with machine on firm level ground, steered straight with frame level and on properly inflated tires.
- Read boom angle and boom extension, then determine allowable load from chart.
- Do not exceed rated loads as dangerous and unstable machine conditions will result.
- Always travel with boom retracted in the lowest possible position.

**SKYJACK**